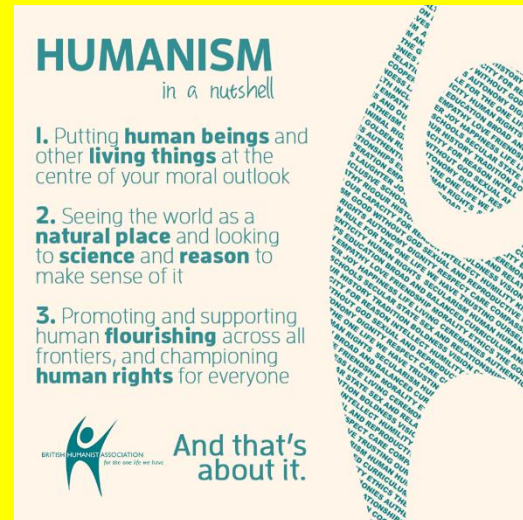
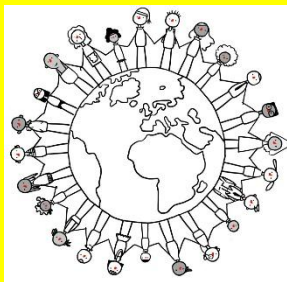


Year 6 Religious Education Knowledge Organiser
Unit 2 What does it mean to be Humanist in Britain today?

Religious Education helps pupils to make sense of religion and worldviews, reflecting on their own ideas and ways of living

Key Theological Vocabulary

- **non-religious** believe that this life is the only life we have and that the universe is a natural phenomenon.
- **Humanist** share the same beliefs and values, placing human welfare and happiness at the centre.



What we will learn

Make sense of belief:

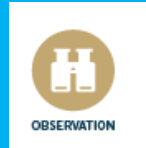
Understand the impact:

Religion	Age group	Sex	Ethnic group	Worcestershire	Region	Nation	Worcestershire	Region	Nation
Christian	0-15	Male	White British	78.1%	78.1%	78.1%	78.1%	78.1%	78.1%
		Female	White British	78.1%	78.1%	78.1%	78.1%	78.1%	78.1%
		Male	Other	78.1%	78.1%	78.1%	78.1%	78.1%	78.1%
		Female	Other	78.1%	78.1%	78.1%	78.1%	78.1%	78.1%
	16-24	Male	White British	78.1%	78.1%	78.1%	78.1%	78.1%	78.1%
		Female	White British	78.1%	78.1%	78.1%	78.1%	78.1%	78.1%
		Male	Other	78.1%	78.1%	78.1%	78.1%	78.1%	78.1%
		Female	Other	78.1%	78.1%	78.1%	78.1%	78.1%	78.1%
	25-34	Male	White British	78.1%	78.1%	78.1%	78.1%	78.1%	78.1%
		Female	White British	78.1%	78.1%	78.1%	78.1%	78.1%	78.1%
		Male	Other	78.1%	78.1%	78.1%	78.1%	78.1%	78.1%
		Female	Other	78.1%	78.1%	78.1%	78.1%	78.1%	78.1%
35-44	Male	White British	78.1%	78.1%	78.1%	78.1%	78.1%	78.1%	
	Female	White British	78.1%	78.1%	78.1%	78.1%	78.1%	78.1%	
	Male	Other	78.1%	78.1%	78.1%	78.1%	78.1%	78.1%	
	Female	Other	78.1%	78.1%	78.1%	78.1%	78.1%	78.1%	
45-54	Male	White British	78.1%	78.1%	78.1%	78.1%	78.1%	78.1%	
	Female	White British	78.1%	78.1%	78.1%	78.1%	78.1%	78.1%	
	Male	Other	78.1%	78.1%	78.1%	78.1%	78.1%	78.1%	
	Female	Other	78.1%	78.1%	78.1%	78.1%	78.1%	78.1%	
55-64	Male	White British	78.1%	78.1%	78.1%	78.1%	78.1%	78.1%	
	Female	White British	78.1%	78.1%	78.1%	78.1%	78.1%	78.1%	
	Male	Other	78.1%	78.1%	78.1%	78.1%	78.1%	78.1%	
	Female	Other	78.1%	78.1%	78.1%	78.1%	78.1%	78.1%	
65-74	Male	White British	78.1%	78.1%	78.1%	78.1%	78.1%	78.1%	
	Female	White British	78.1%	78.1%	78.1%	78.1%	78.1%	78.1%	
	Male	Other	78.1%	78.1%	78.1%	78.1%	78.1%	78.1%	
	Female	Other	78.1%	78.1%	78.1%	78.1%	78.1%	78.1%	
75+	Male	White British	78.1%	78.1%	78.1%	78.1%	78.1%	78.1%	
	Female	White British	78.1%	78.1%	78.1%	78.1%	78.1%	78.1%	
	Male	Other	78.1%	78.1%	78.1%	78.1%	78.1%	78.1%	
	Female	Other	78.1%	78.1%	78.1%	78.1%	78.1%	78.1%	
Total	Male	White British	78.1%	78.1%	78.1%	78.1%	78.1%	78.1%	
	Female	White British	78.1%	78.1%	78.1%	78.1%	78.1%	78.1%	
	Male	Other	78.1%	78.1%	78.1%	78.1%	78.1%	78.1%	
	Female	Other	78.1%	78.1%	78.1%	78.1%	78.1%	78.1%	
Other	Male	White British	1.9%	1.9%	1.9%	1.9%	1.9%	1.9%	
	Female	White British	1.9%	1.9%	1.9%	1.9%	1.9%	1.9%	
	Male	Other	1.9%	1.9%	1.9%	1.9%	1.9%	1.9%	
	Female	Other	1.9%	1.9%	1.9%	1.9%	1.9%	1.9%	
No religion	Male	White British	1.9%	1.9%	1.9%	1.9%	1.9%	1.9%	
	Female	White British	1.9%	1.9%	1.9%	1.9%	1.9%	1.9%	
	Male	Other	1.9%	1.9%	1.9%	1.9%	1.9%	1.9%	
	Female	Other	1.9%	1.9%	1.9%	1.9%	1.9%	1.9%	
Total	Male	White British	1.9%	1.9%	1.9%	1.9%	1.9%	1.9%	
	Female	White British	1.9%	1.9%	1.9%	1.9%	1.9%	1.9%	
	Male	Other	1.9%	1.9%	1.9%	1.9%	1.9%	1.9%	
	Female	Other	1.9%	1.9%	1.9%	1.9%	1.9%	1.9%	

Source: Office for National Statistics, 2011 Census, Religion, Ethnicity and Age by Sex, England and Wales, 2011

Notes: The data is presented in a table with 10 columns: Religion, Age group, Sex, Ethnic group, Worcestershire, Region, Nation, and three additional columns for the percentage of the population in each category. The data is presented in a table with 10 columns: Religion, Age group, Sex, Ethnic group, Worcestershire, Region, Nation, and three additional columns for the percentage of the population in each category.

Ways of Knowing:



• Famous Humanists



Stephen Fry

Professor Alice
Roberts



Sandy Toksvig

